

SLP-TX400

4 inch Thermal Transfer
Desktop Label Printer



Retail



Warehouse



Healthcare



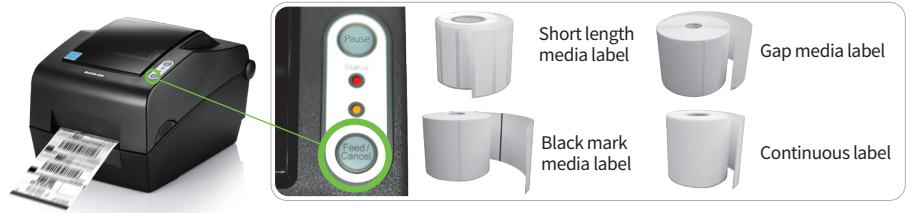
Post &
Parcel

Smart and Premium



Outstanding Competibility

- Fully compatible with market-leading programming languages
- Reliable wireless connectivity with Smart Mobile Devices
- Support all major operating systems including Android™, iOS™ and Windows®



Premium-Level Performance

- Fast Data Processing and Printing Speed up to 7 ips (178 mm/sec)
- Smart Media Detection™ : Automatic paper sensing
- All in one Plus™ Interface
 - ① USB + Serial + Parallel
 - ② USB + Serial + Ethernet + USB Host
- Optional WLAN(802.11a/b/g/n/ac) or Bluetooth Dongle supported via a USB Host Port

User-Friendly Design

- Wide range of ribbon roll length from 74m to 300m
- Easy paper loading with adjustable paper guide
- Pause and cancel function-keys



BIXOLON
a Better Solution for your Business™

SLP-TX400

4 inch Thermal Transfer Desktop Label Printer

Specifications

Printer Specifications

Print Method

Thermal Transfer, Direct Thermal

Print Speed

SLP-TX400: Up to 7 ips (178 mm/sec)
SLP-TX403: Up to 5 ips (127 mm/sec)

Print Resolution

SLP-TX400: 203 dpi
SLP-TX403: 300 dpi

Print Width

SLP-TX400: Up to 108 mm
SLP-TX403: Up to 105.7 mm

Print Length

Up to 1,000 mm

Sensor

Transmissive, Reflective (Adjustable),
Ribbon-End, Head Open

Media Characteristics

Media Type

Gap, Black Mark, Notch, Continuous, Fan-Fold

Media Width

25 ~ 112 mm

Media Roll Diameter

Up to 130 mm

Media Thickness

0.06 ~ 0.20 mm

Supply Method

Easy Paper Loading

Inner Core

25.4 ~ 38.1mm

Ribbon Characteristics

Ribbon Type

Wax, Wax/Resin, Resin, Outside

Ribbon Width

33 ~ 110 mm

Ribbon Length

Up to 300 m

Core Inner Diameter

25.4 mm, 12.7 mm

Physical Characteristics

Dimensions (W x D x H)

214 x 310 x 195 mm
(8.42 x 12.20 x 7.67 inch)

Weight

2.85 kg (6.28 lbs.)

Electrical

EnergyStar Certified,
External Power Adaptor 100-240 V AC, 50/60 Hz

Performance Characteristics

Memory

64 MB SDRAM, 128 MB Flash

Interface

- ① USB + Serial + Parallel
- ② USB + Serial + Ethernet + USB Host

* Compatible with WLAN(802.11a/b/g/n/ac) or
Bluetooth Dongle via a USB Host Port

Real Time Clock

Supported (Optional)

Environment Characteristics

Temperature

Operating: 5 ~ 40 °C (41 ~ 104 °F)
Storage: -20 ~ 60 °C (-4 ~ 140 °F)

Humidity

Operating: 10 ~ 80 % RH
Storage: 10 ~ 90 % RH

Software

Emulation

SLCS™, BPL-Z™, BPL-E™, BPL-D™ (Optional)

Driver / Utility

Windows Driver (Europlus / Seagull),
Linux / Mac CUPS Driver,
Virtual COM USB / Ethernet Driver,
Utility Program, OPOS / JPOS Driver,
Bartender Ultralite for BIXOLON,
Device Driver for SAP®, Network Auto Installer

Developer Tools

Android / iOS / Windows SDK, Linux SDK,
Chrome SDK, Xamarin SDK, Web Print SDK

Design & Print

Label Artist-II™,
Label Artist™ Mobile (Android, iOS),
mPrint App (Android, iOS)

MDM

SOTI Connect supported

Fonts / Graphics / Symbologies

Fonts

Bitmap Fonts (10 SLCS™, 16 BPL-Z™, 5 BPL-E™),
Scalable Fonts (1 SLCS™, 1 BPL-Z™),
23 Code page,
Unicode supported (UTF-8, UTF-16LE, UTF-16BE)

Graphics

Supporting user-defined fonts, graphics,
formats and logos

Barcode Symbologies

1D: Codabar, Code 11, Code 39, Code 93,
Code 128, EAN-13, EAN-8, Industrial 2-of-5,
Interleaved 2-of-5, Logmars, MSI, Plessey,
Postnet, GS1 DataBar (RSS-14),
Standard 2-of-5, UPC/EAN extensions,
UPC-A, UPC-E, IMB
2D: Aztec, Codablock, Code 49, Data Matrix,
MaxiCode, MicroPDF417, PDF417, QR code,
TLC 39

Accessories

Options

Peeler, Auto Cutter, External Paper Supply,
WLAN Dongle (Consensus required),
Serial cable, Parallel cable, USB cable

Supplies

B-ribbon™, B-band™